

### FEATURES:

- Compact detector switch with smooth switching action
- SMT type is available for tape & reel package.

### MATERIAL:

- Cover: Stainless Steel.
- Base: LCP High-Temp Thermoplastic  
Color: Black
- Stem: LCP High-Temp Thermoplastic  
Color: Black
- Contact Disc: Phosphor bronze with silver plated
- Terminal: Phosphor bronze with silver plated.

### SPECIFICATION

#### MECHANICAL

- Operation Force: 50 gf max
- Stroke: 1.03mm max
- Operation Temperature Range: -10°C to +60°C
- Storage Temperature Range: -20°C to +70°C
- Vibration Test: MIL-STFD-202F METHOD 201A.

Frequency: 10-55-10Hz/1 minute

Directions: X,Y,Z, three mutually perpendicular directions.

Time: 2 hours each direction.

High reliability.

- Shock Test: MIL-STD-202F METHOD 213B

CONDITION A.

Gravity: 50G (peak value), 11 msec

Direction and times: 6 sides and 3 times in each direction.

High reliability.

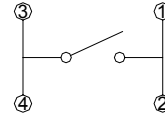
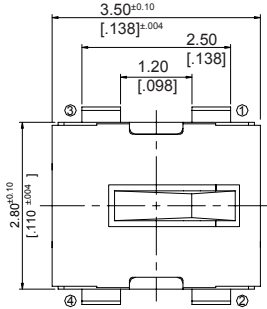
#### ELECTRICAL

- Electrical Life: 100 000 cycles
- Rating: 1mA, 5VDC
- Contact Resistance: 1Ω max.
- Insulation Resistance: 100MΩmin. at 100VDC.
- Dielectric Strength: 100VAC/1 minute.
- Contact Arrangement: 1 pole , 1 throw

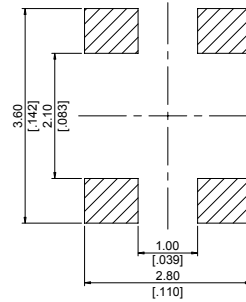
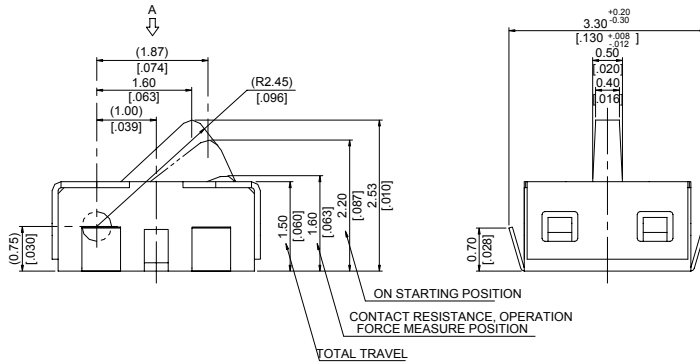
### Packaging:

Part Number	Number per Tube	Number per Reel
SVBDS	-	2600
SVBDS-P	-	

### SVBDS

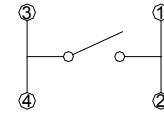
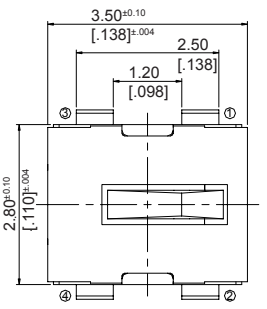


Circuit

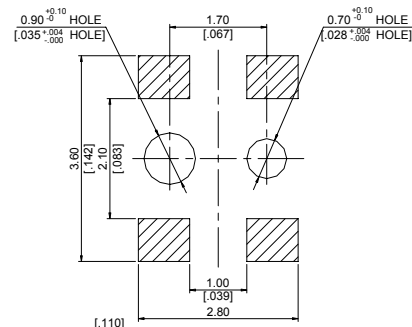
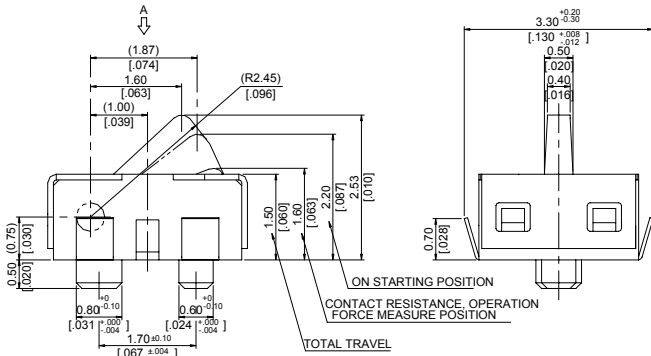


P.C.B Layout  
(View From The Direction A)

### SVBDS-P

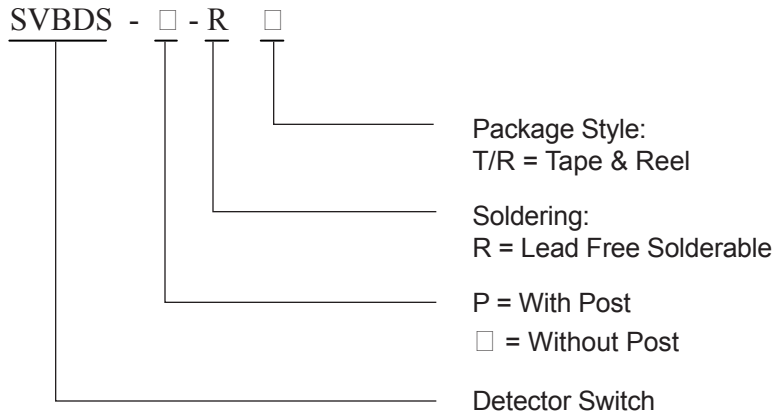


Circuit



P.C.B Layout  
(View From The Direction A)

### HOW TO ORDER:



### Soldering Process

▲ Hand Soldering : Use a soldering iron of 30 watts, controlled at 350°C approximately 5 seconds while applying.

▲ Reflow Soldering : When applying reflow soldering, the peak temperature of the reflow oven should be set at 260°C max.

### Temperature Profile:

